

# AI-03595 NYC to Florida Workflow

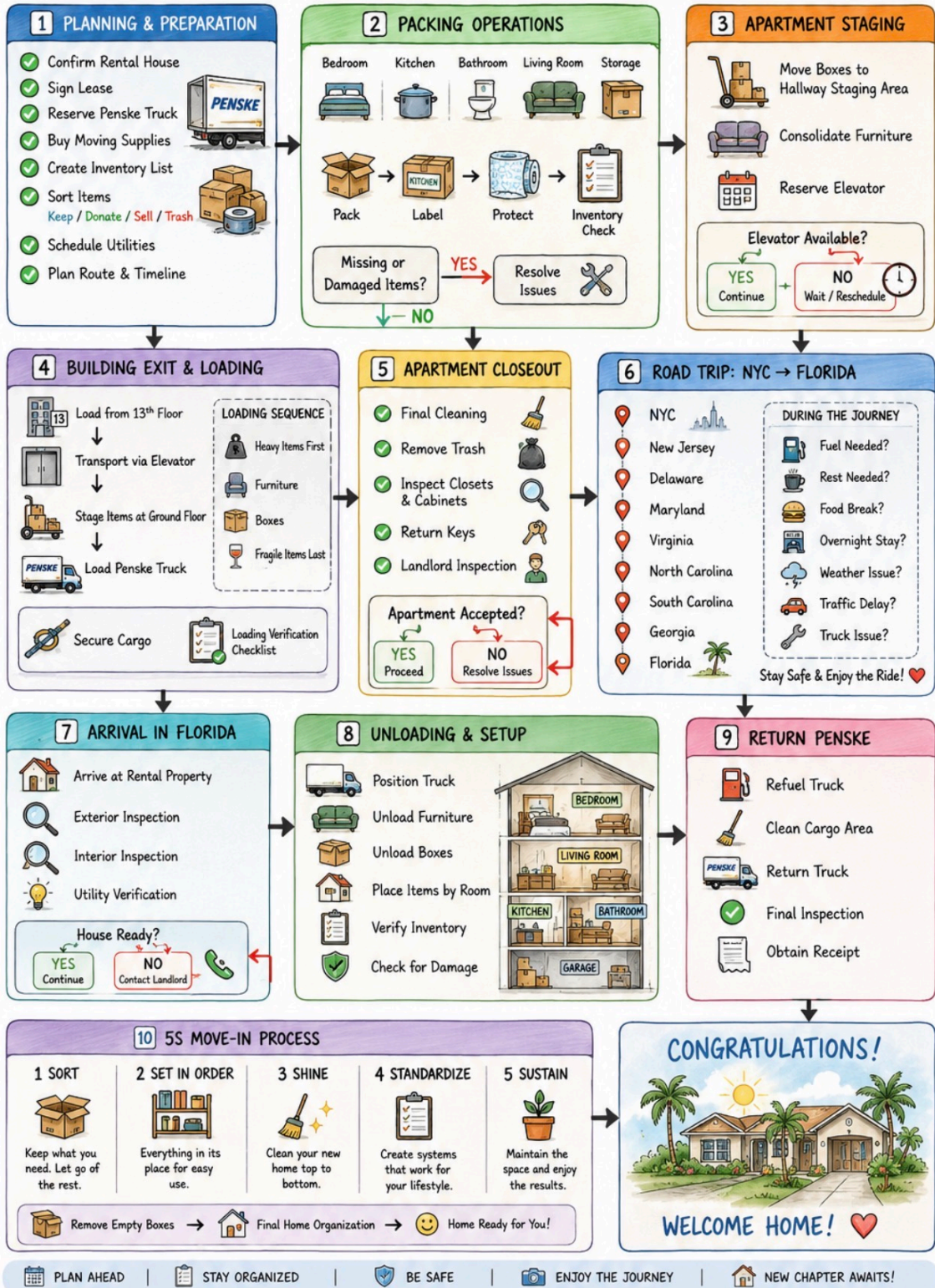
Owner	Ⓜ Rigel Arcayan
Tags	Project
Created time	June 20, 2026 6:49 AM

Make this prompt better: Create an n8n type workflow of our relocation from NYC to FL. Start from the prep stage to move in to the new rental house. Include Penske rental, sorting, packing , staging in hallway, loading to elevator 13th floor, to staging at ground floor, loading to truck, final cleanup of apartment, start of journey, routes, rest stops, arrival in FL. Unloading, returning the truck , unpacking, 5S then end.



# NYC → FLORIDA RELOCATION

FROM 13<sup>TH</sup> FLOOR TO YOUR NEW HOME



PLAN AHEAD | STAY ORGANIZED | BE SAFE | ENJOY THE JOURNEY | NEW CHAPTER AWAITS!

Here's a more structured and detailed version of your prompt that will produce a cleaner, more complete n8n-style workflow diagram:

**Prompt:**

Create a comprehensive **n8n-style workflow diagram** that models the complete relocation process from **New York City to Florida**, beginning with move preparation and ending with a fully organized rental home.

**Workflow Requirements**

Use standard n8n workflow conventions with:

- Trigger Node (Start)
- Action Nodes
- Decision Nodes
- Parallel Processing where appropriate
- Error Handling / Contingency Branches
- Milestone Checkpoints
- End Node (Completion)

**Phase 1: Move Planning & Preparation**

1. Start Relocation Project
2. Confirm Florida Rental House
3. Sign Lease & Receive Move-In Instructions
4. Reserve Penske Moving Truck
5. Purchase Moving Supplies
  - Boxes
  - Packing Tape
  - Bubble Wrap
  - Labels
  - Markers

6. Create Inventory List
7. Categorize Belongings
  - Keep
  - Donate
  - Sell
  - Trash
8. Schedule Utility Transfers
9. Confirm Travel Route
10. Establish Move Timeline

### **Phase 2: Packing Operations**

1. Pack Room-by-Room
  - Bedroom
  - Kitchen
  - Bathroom
  - Living Room
  - Storage Areas
2. Label All Boxes
3. Protect Fragile Items
4. Inventory Verification
5. Decision Node:
  - Missing Items?
  - Damaged Items?

### **Phase 3: Apartment Staging**

1. Move Packed Boxes to Hallway Staging Area
2. Consolidate Furniture for Loading
3. Final Apartment Walkthrough

4. Elevator Reservation Check
5. Decision Node:
  - Elevator Available?
    - Yes → Continue
    - No → Wait / Reschedule

#### **Phase 4: Building Exit Logistics**

1. Load Boxes from 13th Floor Apartment
2. Transport via Elevator
3. Stage Items at Ground Floor
4. Organize Loading Sequence
  - Heavy Items First
  - Furniture
  - Boxes
  - Fragile Items Last
5. Load Penske Truck
6. Secure Cargo
7. Loading Verification Checklist

#### **Phase 5: Apartment Closeout**

1. Final Apartment Cleaning
2. Trash Removal
3. Inspect Closets and Cabinets
4. Return Keys / Complete Move-Out Procedure
5. Landlord Inspection
6. Decision Node:
  - Apartment Accepted?
    - Yes → Continue

- No → Resolve Issues

## **Phase 6: Road Trip NYC → Florida**

1. Begin Journey
2. GPS Route Validation

Include major route milestones:

- New York City
- New Jersey
- Delaware
- Maryland
- Virginia
- North Carolina
- South Carolina
- Georgia
- Florida

Include decision nodes for:

- Traffic Delays
- Weather Conditions
- Fuel Level
- Driver Fatigue
- Mechanical Issues

Include recurring loops:

- Fuel Stop
- Rest Stop
- Food Break
- Overnight Hotel (if required)

## **Phase 7: Arrival in Florida**

1. Arrive at Rental Property
2. Exterior Inspection
3. Interior Inspection
4. Utility Verification
5. Decision Node:
  - House Ready?
    - Yes → Continue
    - No → Contact Landlord

### **Phase 8: Unloading Operations**

1. Position Penske Truck
2. Unload Furniture
3. Unload Boxes
4. Place Items by Room
5. Verify Inventory
6. Check for Transit Damage

### **Phase 9: Truck Return**

1. Refuel Penske Truck
2. Clean Cargo Area
3. Return Truck
4. Complete Final Inspection
5. Obtain Return Receipt

### **Phase 10: Move-In & 5S Organization**

1. Unpack Essentials
2. Assemble Furniture
3. Unpack Remaining Boxes

Apply **5S Methodology**:

- Sort
  - Set in Order
  - Shine
  - Standardize
  - Sustain
1. Establish Permanent Storage Locations
  2. Remove Empty Boxes
  3. Final Home Organization
  4. Home Ready for Occupancy

### **Completion Phase**

1. Relocation Success Review
2. Project Complete

### **Output Requirements**

Generate:

1. A visual **n8n workflow diagram**
2. Mermaid flowchart code (graph TD)
3. Swimlane view grouped by:
  - Planning
  - Packing
  - Staging
  - Loading
  - Travel
  - Arrival
  - Unloading
  - 5S Organization

4. Include realistic decision branches, loops, checkpoints, and exception handling similar to a production-grade automation workflow.

**Goal:** Create a workflow detailed enough that it could be used as a real relocation project management process for moving from a 13th-floor NYC apartment to a rental house in Florida using a Penske moving truck.

### Create the n8n workflow and present it visually

flowchart TD

```
A([Start Relocation Project])
```

```
%% PHASE 1 - PLANNING
```

```
subgraph P1[Phase 1 - Planning & Preparation]
```

```
  B[Confirm Florida Rental House]
```

```
  C[Sign Lease]
```

```
  D[Reserve Penske Truck]
```

```
  E[Purchase Moving Supplies]
```

```
  F[Create Inventory List]
```

```
  G[Sort Items<br/>Keep / Donate / Sell / Trash]
```

```
  H[Schedule Utility Transfers]
```

```
  I[Plan Route & Timeline]
```

```
end
```

```
%% PHASE 2 - PACKING
```

```
subgraph P2[Phase 2 - Packing Operations]
```

```
  J[Pack Bedrooms]
```

```
  K[Pack Kitchen]
```

```
  L[Pack Bathrooms]
```

```
  M[Pack Living Areas]
```

```
  N[Label Boxes]
```

```
  O[Protect Fragile Items]
```

```
  P[Inventory Verification]
```

```
  Q{Missing or<br/>Damaged Items?}
```

```
  R[Resolve Issues]
```

```
end
```

```

%% PHASE 3 - STAGING
subgraph P3[Phase 3 - Apartment Staging]
  S[Move Boxes to Hallway]
  T[Stage Furniture]
  U[Reserve Elevator]
  V{Elevator Available?}
  W[Wait / Reschedule]
end

%% PHASE 4 - LOADING
subgraph P4[Phase 4 - Loading Operations]
  X[Move Items from 13th Floor]
  Y[Transport via Elevator]
  Z[Stage at Ground Floor]
  AA[Load Penske Truck]
  AB[Secure Cargo]
  AC[Loading Checklist]
end

%% PHASE 5 - APARTMENT CLOSEOUT
subgraph P5[Phase 5 - Apartment Closeout]
  AD[Final Cleaning]
  AE[Remove Trash]
  AF[Inspect Closets & Cabinets]
  AG[Return Keys]
  AH{Apartment Accepted?}
  AI[Resolve Issues]
end

%% PHASE 6 - JOURNEY
subgraph P6[NYC to Florida Journey]
  AJ[Depart NYC]
  AK[New Jersey]
  AL[Delaware]
  AM[Maryland]

```

```
AN[Virginia]
AO[North Carolina]
AP[South Carolina]
AQ[Georgia]
AR[Florida]

AS{Fuel Needed?}
AT[Fuel Stop]

AU{Rest Needed?}
AV[Rest Stop]

AW{Overnight Stay?}
AX[Hotel]

AY{Traffic / Weather Issue?}
AZ[Alternate Route]
end
```

%% PHASE 7 - ARRIVAL

```
subgraph P7[Arrival Inspection]
  BA[Arrive at Rental House]
  BB[Exterior Inspection]
  BC[Interior Inspection]
  BD[Verify Utilities]
  BE{House Ready?}
  BF[Contact Landlord]
end
```

%% PHASE 8 - UNLOADING

```
subgraph P8[Unloading Operations]
  BG[Position Truck]
  BH[Unload Furniture]
  BI[Unload Boxes]
  BJ[Place Items by Room]
  BK[Inventory Verification]
end
```

```

    BL[Damage Check]
end

%% PHASE 9 - TRUCK RETURN
subgraph P9[Penske Return]
    BM[Refuel Truck]
    BN[Clean Cargo Area]
    BO[Return Penske Truck]
    BP[Obtain Receipt]
end

%% PHASE 10 - 5S ORGANIZATION
subgraph P10[5S Move-In Process]
    BQ[Sort]
    BR[Set in Order]
    BS[Shine]
    BT[Standardize]
    BU[Sustain]
    BV[Remove Empty Boxes]
    BW[Final Home Setup]
end

BX([Move Complete])

%% FLOW CONNECTIONS
A --> B --> C --> D --> E --> F --> G --> H --> I

I --> J
I --> K
I --> L
I --> M

J --> N
K --> N
L --> N
M --> N

```

N --> O --> P --> Q

Q -- Yes --> R --> P

Q -- No --> S

S --> T --> U --> V

V -- No --> W --> U

V -- Yes --> X

X --> Y --> Z --> AA --> AB --> AC

AC --> AD --> AE --> AF --> AG --> AH

AH -- No --> AI --> AD

AH -- Yes --> AJ

AJ --> AK --> AS

AS -- Yes --> AT --> AU

AS -- No --> AU

AU -- Yes --> AV --> AY

AU -- No --> AY

AY -- Yes --> AZ --> AW

AY -- No --> AW

AW -- Yes --> AX --> AL

AW -- No --> AL

AL --> AM --> AN --> AO --> AP --> AQ --> AR

AR --> BA --> BB --> BC --> BD --> BE

BE -- No --> BF --> BE

BE -- Yes --> BG

BG --> BH --> BI --> BJ --> BK --> BL

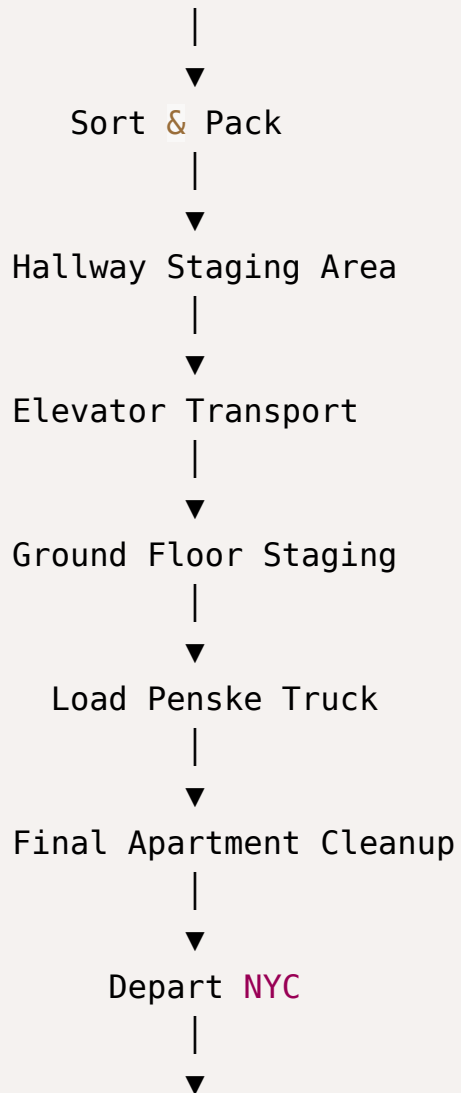
BL --> BM --> BN --> BO --> BP

BP --> BQ --> BR --> BS --> BT --> BU --> BV --> BW --> B

X

### Visual Flow Summary

NYC Apartment (13th Floor)



NJ → DE → MD → VA → NC → SC → GA → FL

Fuel / Rest / Hotel

Arrive Florida Rental

House Inspection

Unload Truck

Return Penske

Unpack

5S Organization

Home Operational

END

### Convert into a spreadsheet ready for copy paste to OpenProject

Below is a **CSV-style spreadsheet** that can be copied directly into **OpenProject Work Packages** (or imported through Excel/CSV after minor column mapping).

ID, Parent ID, Phase, Task Name, Type, Priority, Duration (hrs), Predecessor, Notes

1,, Planning & Preparation, Start Relocation Project, Milestone, High, 0,, Project kickoff

2,1, Planning & Preparation, Confirm Florida Rental House, Task, High, 2,1,

3,1, Planning & Preparation, Sign Lease, Task, High, 1,2,

4,1, Planning & Preparation, Reserve Penske Truck, Task, High, 1,3,

5,1, Planning & Preparation, Purchase Moving Supplies, Task, Medium, 4,4,

6,1, Planning & Preparation, Create Inventory List, Task, Medium, 4,5,

7,1, Planning & Preparation, Sort Items - Keep, Task, High, 8,6,

8,1, Planning & Preparation, Sort Items - Donate, Task, Medium, 4,6,

9,1, Planning & Preparation, Sort Items - Sell, Task, Medium, 4,6,

10,1, Planning & Preparation, Sort Items - Trash, Task, Low, 2,6,

11,1, Planning & Preparation, Schedule Utility Transfers, Task, Medium, 2,4,

12,1, Planning & Preparation, Plan Travel Route, Task, Medium, 2,4,

13,1, Planning & Preparation, Create Move Timeline, Task, Medium, 2,12,

14,, Packing Operations, Begin Packing Phase, Milestone, High, 0,13,

15,14, Packing Operations, Pack Bedroom, Task, High, 6,14,

16,14, Packing Operations, Pack Kitchen, Task, High, 8,14,

17,14, Packing Operations, Pack Bathroom, Task, Medium, 3,14,

18,14, Packing Operations, Pack Living Room, Task, High, 6,14,

19,14, Packing Operations, Pack Storage Areas, Task, Medium, 4,14,

20,14, Packing Operations, Label All Boxes, Task, High, 3,15,

21,14, Packing Operations, Protect Fragile Items, Task, High, 2,20,

22, 14, Packing Operations, Inventory Verification, Task, High, 2, 2, 1,

23, , Apartment Staging, Move Boxes to Hallway Staging Area, Task, High, 4, 22,

24, , Apartment Staging, Consolidate Furniture, Task, High, 2, 23,

25, , Apartment Staging, Reserve Elevator, Task, High, 1, 24,

26, , Apartment Staging, Elevator Availability Check, Milestone, High, 0, 25,

27, , Loading Operations, Move Items from Apartment to Elevator, Task, High, 4, 26,

28, , Loading Operations, Transport via Elevator to Ground Floor, Task, High, 3, 27,

29, , Loading Operations, Ground Floor Staging Area Setup, Task, High, 2, 28,

30, , Loading Operations, Load Heavy Furniture, Task, High, 3, 29,

31, , Loading Operations, Load Appliances, Task, Medium, 1, 30,

32, , Loading Operations, Load Boxes, Task, High, 3, 31,

33, , Loading Operations, Load Fragile Items Last, Task, High, 1, 32,

34, , Loading Operations, Secure Cargo, Task, High, 1, 33,

35, , Loading Operations, Loading Verification Checklist, Task, High, 1, 34,

36, , Apartment Closeout, Final Apartment Cleaning, Task, High, 4, 35,

37, , Apartment Closeout, Remove Trash, Task, Medium, 1, 36,

38, , Apartment Closeout, Inspect Cabinets, Task, Medium, 1, 37,

39, , Apartment Closeout, Inspect Closets, Task, Medium, 1, 38,

40, , Apartment Closeout, Return Keys, Task, High, 1, 39,

41, , Apartment Closeout, Landlord Inspection, Milestone, High, 0, 40,

42, , Travel to Florida, Depart NYC, Milestone, High, 0, 41,

43, , Travel to Florida, Drive Through New Jersey, Task, High, 2, 4

2,  
44,,Travel to Florida,Fuel Stop #1,Task,Medium,1,43,  
45,,Travel to Florida,Drive Through Delaware,Task,High,1,44,  
46,,Travel to Florida,Drive Through Maryland,Task,High,2,45,  
47,,Travel to Florida,Rest Stop #1,Task,Medium,1,46,  
48,,Travel to Florida,Drive Through Virginia,Task,High,4,47,  
49,,Travel to Florida,Food Stop,Task,Medium,1,48,  
50,,Travel to Florida,Drive Through North Carolina,Task,High,  
4,49,  
51,,Travel to Florida,Overnight Hotel Stay,Task,Medium,10,50,  
52,,Travel to Florida,Drive Through South Carolina,Task,High,  
3,51,  
53,,Travel to Florida,Fuel Stop #2,Task,Medium,1,52,  
54,,Travel to Florida,Drive Through Georgia,Task,High,4,53,  
55,,Travel to Florida,Enter Florida,Milestone,High,0,54,  
  
56,,Arrival & Inspection,Arrive at Rental House,Milestone,High,  
0,55,  
57,,Arrival & Inspection,Exterior Inspection,Task,High,1,56,  
58,,Arrival & Inspection,Interior Inspection,Task,High,1,57,  
59,,Arrival & Inspection,Verify Utilities,Task,High,1,58,  
60,,Arrival & Inspection,House Readiness Verification,Milestone,  
High,0,59,  
  
61,,Unloading Operations,Position Penske Truck,Task,High,1,6  
0,  
62,,Unloading Operations,Unload Furniture,Task,High,3,61,  
63,,Unloading Operations,Unload Boxes,Task,High,3,62,  
64,,Unloading Operations,Place Items by Room,Task,High,4,63,  
65,,Unloading Operations,Inventory Verification,Task,High,1,6  
4,  
66,,Unloading Operations,Damage Inspection,Task,High,1,65,  
  
67,,Penske Return,Refuel Truck,Task,High,1,66,  
68,,Penske Return,Clean Cargo Area,Task,Medium,1,67,  
69,,Penske Return,Return Penske Truck,Task,High,2,68,

70,, Penske Return, Obtain Return Receipt, Milestone, High, 0, 69,

71,, 5S Move-In Process, Sort (Keep Only Needed Items), Task, High, 4, 70,

72,, 5S Move-In Process, Set In Order, Task, High, 6, 71,

73,, 5S Move-In Process, Shine (Clean House), Task, Medium, 4, 72,

74,, 5S Move-In Process, Standardize Storage Locations, Task, Medium, 4, 73,

75,, 5S Move-In Process, Sustain Procedures, Task, Medium, 2, 74,

76,, 5S Move-In Process, Remove Empty Boxes, Task, Medium, 2, 75,

77,, 5S Move-In Process, Final Home Organization, Task, High, 4, 76,

78,, Project Completion, Home Operational, Milestone, High, 0, 77,

79,, Project Completion, Relocation Project Complete, Milestone, High, 0, 78,

## OpenProject Structure

For OpenProject, I would also add these custom fields:

Custom Field	Example
Owner	Rigel / Britta / Brent
Location	Apartment / Hallway / Elevator / Truck / Rental House
Status	Open / In Progress / Complete
Category	Packing / Loading / Travel / Setup
Checklist	Yes/No
Vehicle	Penske 16' or 22'
Room	Bedroom / Kitchen / Garage
Box Count	Numeric

Priority	Critical / High / Medium / Low
----------	--------------------------------

This will give you a relocation project plan that behaves very similarly to a professional project schedule with Gantt chart support in OpenProject.